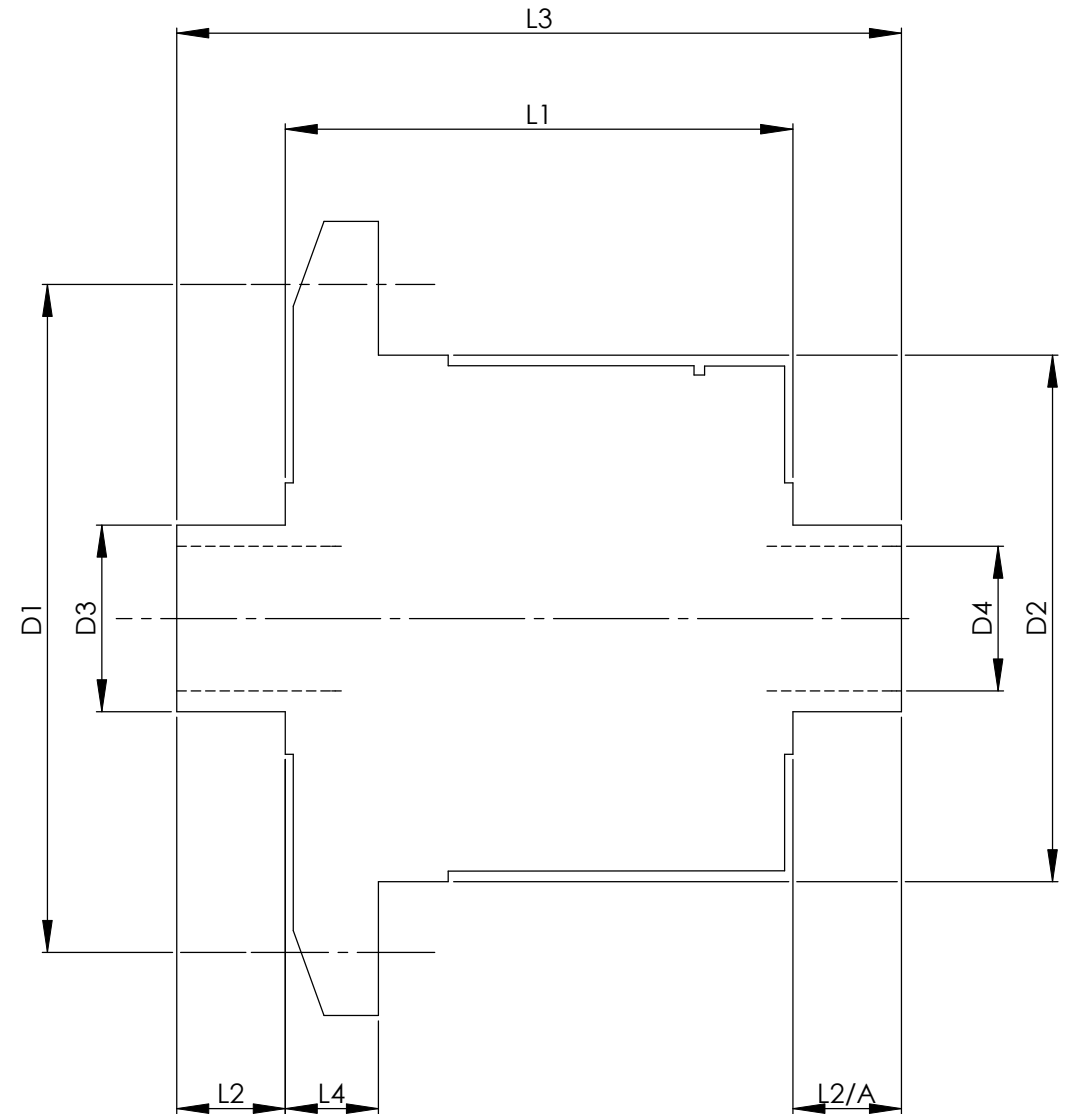


		INCH	MM
CROWN WHEEL BOLT PCD	D1	5.335	135.5
No. OF BOLTS		10	10.0
THREAD / THRO' HOLE		0.500	12.7
CROWN WHEEL SPIGOT DIA	D2	4.5288	115.0
BEARING DIA	D3	1.97	50.0
BEARING DISTANCE	L1	4.328	109.9
SPIGOT LENGTH	L2	1.497	38.0
	L2/A	1.418	36.0
OVERALL LENGTH	L3	7.243	184.0
BEARING/CROWN WHEEL	L4	0.372	9.4
BORE	D4	1.2018	30.5

DRIVE SHAFT SPLINE:-

No. OF TEETH	37
PITCH	32/64 D.P.
TYPE	FILLET ROOT SIDE FIT
PRESSURE ANGLE	30 DEG



TITLE R.W.D. DIFF DATA SHEET.

SCALE 1:1 U.O.S. SHEET 1 OF 1

Drg. No. QDF12Q

IF IN DOUBT, ASK.

Quaife Design & Development.

THIS DRAWING OR DESIGN IS STRICTLY CONFIDENTIAL & THE COPYRIGHT THEREIN IS THE EXCLUSIVE PROPERTY OF R.T. QUAIFF ENGINEERING LTD. AND MAY NOT BE USED COPIED OR EXHIBITED WITHOUT THEIR WRITTEN PERMISSION.

FINISH. MACH.	GRIND@G
LIMITS. FRACT. ± 1/64"	
DEC. ± 0.005"	
MATERIAL.	
TREATMENT.	
ISSUE. 01 DATE. 4.1.07	
DRAWN BY. J.P.D.	

Used In. PORSCHE CAYMAN S